



AP[®] Calculus BC

2014 Free-Response Questions

© 2014 The College Board. College Board, Advanced Placement Program, AP, AP Central, and the acorn logo are registered trademarks of the College Board.

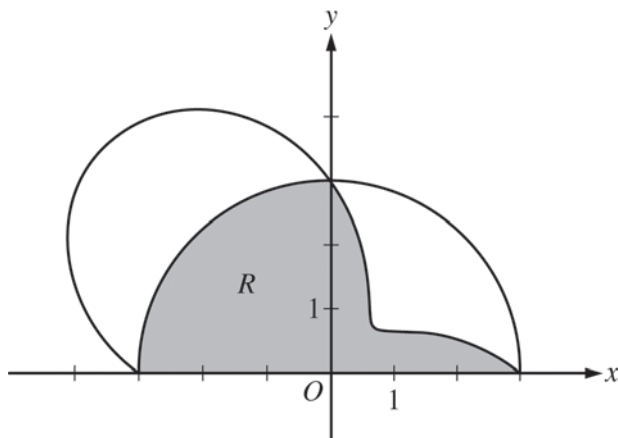
Visit the College Board on the Web: www.collegeboard.org.

AP Central is the official online home for the AP Program: apcentral.collegeboard.org.

CALCULUS BC
SECTION II, Part A
Time—30 minutes
Number of problems—2

A graphing calculator is required for these problems.

1. Grass clippings are placed in a bin, where they decompose. For $0 \leq t \leq 30$, the amount of grass clippings remaining in the bin is modeled by $A(t) = 6.687(0.931)^t$, where $A(t)$ is measured in pounds and t is measured in days.
- (a) Find the average rate of change of $A(t)$ over the interval $0 \leq t \leq 30$. Indicate units of measure.
- (b) Find the value of $A'(15)$. Using correct units, interpret the meaning of the value in the context of the problem.
- (c) Find the time t for which the amount of grass clippings in the bin is equal to the average amount of grass clippings in the bin over the interval $0 \leq t \leq 30$.
- (d) For $t > 30$, $L(t)$, the linear approximation to A at $t = 30$, is a better model for the amount of grass clippings remaining in the bin. Use $L(t)$ to predict the time at which there will be 0.5 pound of grass clippings remaining in the bin. Show the work that leads to your answer.
-

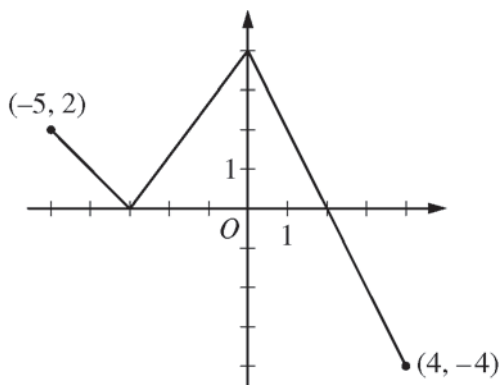


2. The graphs of the polar curves $r = 3$ and $r = 3 - 2\sin(2\theta)$ are shown in the figure above for $0 \leq \theta \leq \pi$.
- (a) Let R be the shaded region that is inside the graph of $r = 3$ and inside the graph of $r = 3 - 2\sin(2\theta)$. Find the area of R .
- (b) For the curve $r = 3 - 2\sin(2\theta)$, find the value of $\frac{dx}{d\theta}$ at $\theta = \frac{\pi}{6}$.
- (c) The distance between the two curves changes for $0 < \theta < \frac{\pi}{2}$. Find the rate at which the distance between the two curves is changing with respect to θ when $\theta = \frac{\pi}{3}$.
- (d) A particle is moving along the curve $r = 3 - 2\sin(2\theta)$ so that $\frac{d\theta}{dt} = 3$ for all times $t \geq 0$. Find the value of $\frac{dr}{dt}$ at $\theta = \frac{\pi}{6}$.
-

END OF PART A OF SECTION II

CALCULUS BC
SECTION II, Part B
Time—60 minutes
Number of problems—4

No calculator is allowed for these problems.

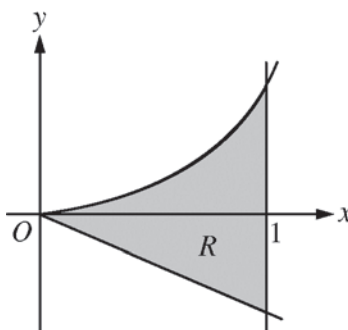


Graph of f

3. The function f is defined on the closed interval $[-5, 4]$. The graph of f consists of three line segments and is shown in the figure above. Let g be the function defined by $g(x) = \int_{-3}^x f(t) dt$.
- (a) Find $g(3)$.
- (b) On what open intervals contained in $-5 < x < 4$ is the graph of g both increasing and concave down? Give a reason for your answer.
- (c) The function h is defined by $h(x) = \frac{g(x)}{5x}$. Find $h'(3)$.
- (d) The function p is defined by $p(x) = f(x^2 - x)$. Find the slope of the line tangent to the graph of p at the point where $x = -1$.
-

t (minutes)	0	2	5	8	12
$v_A(t)$ (meters/minute)	0	100	40	-120	-150

4. Train A runs back and forth on an east-west section of railroad track. Train A 's velocity, measured in meters per minute, is given by a differentiable function $v_A(t)$, where time t is measured in minutes. Selected values for $v_A(t)$ are given in the table above.
- (a) Find the average acceleration of train A over the interval $2 \leq t \leq 8$.
- (b) Do the data in the table support the conclusion that train A 's velocity is -100 meters per minute at some time t with $5 < t < 8$? Give a reason for your answer.
- (c) At time $t = 2$, train A 's position is 300 meters east of the Origin Station, and the train is moving to the east. Write an expression involving an integral that gives the position of train A , in meters from the Origin Station, at time $t = 12$. Use a trapezoidal sum with three subintervals indicated by the table to approximate the position of the train at time $t = 12$.
- (d) A second train, train B , travels north from the Origin Station. At time t the velocity of train B is given by $v_B(t) = -5t^2 + 60t + 25$, and at time $t = 2$ the train is 400 meters north of the station. Find the rate, in meters per minute, at which the distance between train A and train B is changing at time $t = 2$.
-



5. Let R be the shaded region bounded by the graph of $y = xe^{x^2}$, the line $y = -2x$, and the vertical line $x = 1$, as shown in the figure above.
- (a) Find the area of R .
- (b) Write, but do not evaluate, an integral expression that gives the volume of the solid generated when R is rotated about the horizontal line $y = -2$.
- (c) Write, but do not evaluate, an expression involving one or more integrals that gives the perimeter of R .
-

6. The Taylor series for a function f about $x = 1$ is given by $\sum_{n=1}^{\infty} (-1)^{n+1} \frac{2^n}{n} (x-1)^n$ and converges to $f(x)$ for $|x-1| < R$, where R is the radius of convergence of the Taylor series.
- (a) Find the value of R .
- (b) Find the first three nonzero terms and the general term of the Taylor series for f' , the derivative of f , about $x = 1$.
- (c) The Taylor series for f' about $x = 1$, found in part (b), is a geometric series. Find the function f' to which the series converges for $|x-1| < R$. Use this function to determine f for $|x-1| < R$.
-

STOP

END OF EXAM